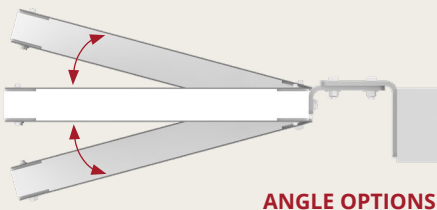
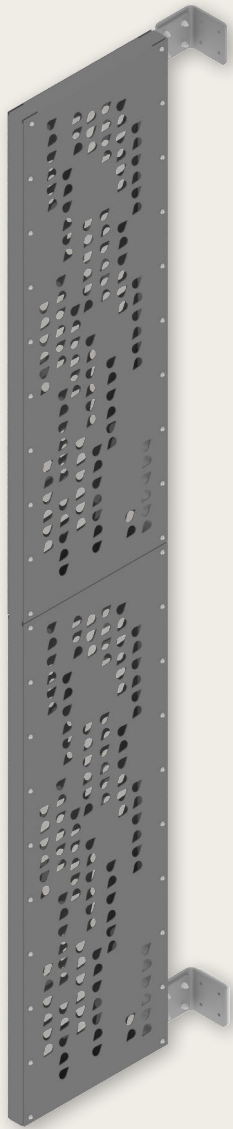


Linear Facade



Parasoleil

303.589.4524
hello@parasoleil.com
parasoleil.com

All Parasoleil patterns are protected under copyright © law. Copying, modifying, or any unauthorized use of these patterns is strictly prohibited.

Commercial exterior decorative screening solution designed for floor-to-floor spanning capability. The ventilated patterned fins create unique and dynamic designs that can enhance airflow and reduce solar heat gain.

INNOVATIVE CLADDING FOR COMMERCIAL EXTERIOR

- Commercial exterior floor-to-floor screening application
- 2-sided cladding panels
- Optimal airflow for natural ventilation
- Modular turnkey system for ease of handling and installation
- Built-in slip-condition and EPDM thermal isolator

APPLICATIONS

- Exterior building façade design
- Parking garage screening
- Glare control to reduce heat gain

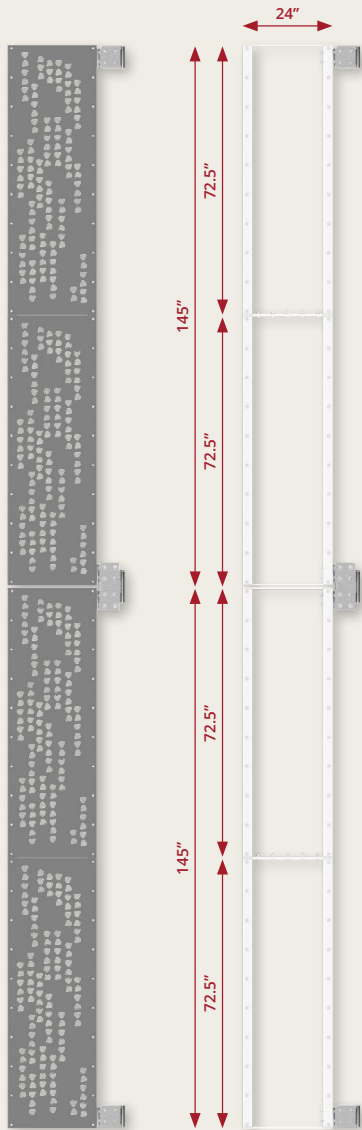
CUSTOM OPTIONS

- Knife plate bracket angles
- Other frame heights and widths available
- Custom perforation pattern

Whatever your project or design needs, Parasoleil's experienced technical team is ready to support you every step of the way to ensure your vision comes to life seamlessly.

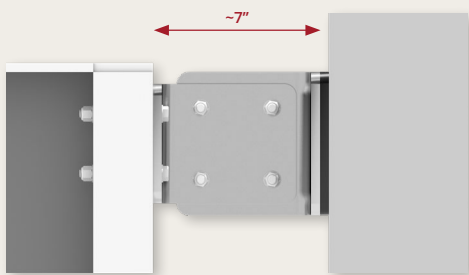
QUESTIONS?

Contact Parasoleil for complete specifications, installation requirements and warranty coverage.

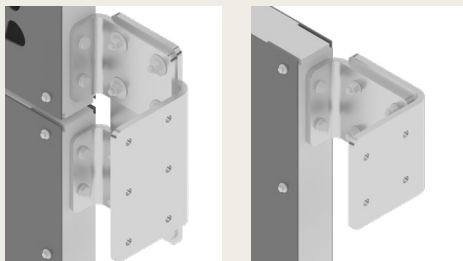


PANEL VIEW

FRAMED VIEW



WALL CONNECTION DETAIL



DOUBLE WALL BRACKET

SINGLE WALL BRACKET

PATTERNED PANEL

- Up to 24" wide
- 5052 aluminum alloy (2-sided)
- Wide array of standard pattern options

FRAME

- 6061 extruded aluminum alloy 2.5" square tubes
- 5052 aluminum alloy matting plates
- 5052 aluminum mounting brackets
- EPDM thermal isolator

FINISH

- AAMA 2604 powder coat options with primer
- Class 1 clear anodized options
- Panel, frame, and hardware default to same finish or can be specified differently.
- Bolts to structure are unfinished

HARDWARE

- Stainless-steel bolt assemblies
- Stainless-steel PDH #12 drill screw panel fasteners

PERFORMANCE

- 45 psf ASD allowable design load
- 12' floor-to-floor maximum span
- Built-in slotted fastener holes for seismic requirements

EXCLUSIONS

- Field verification and measurements
- Installation
- Wall anchors and associated engineering