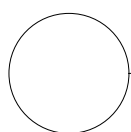
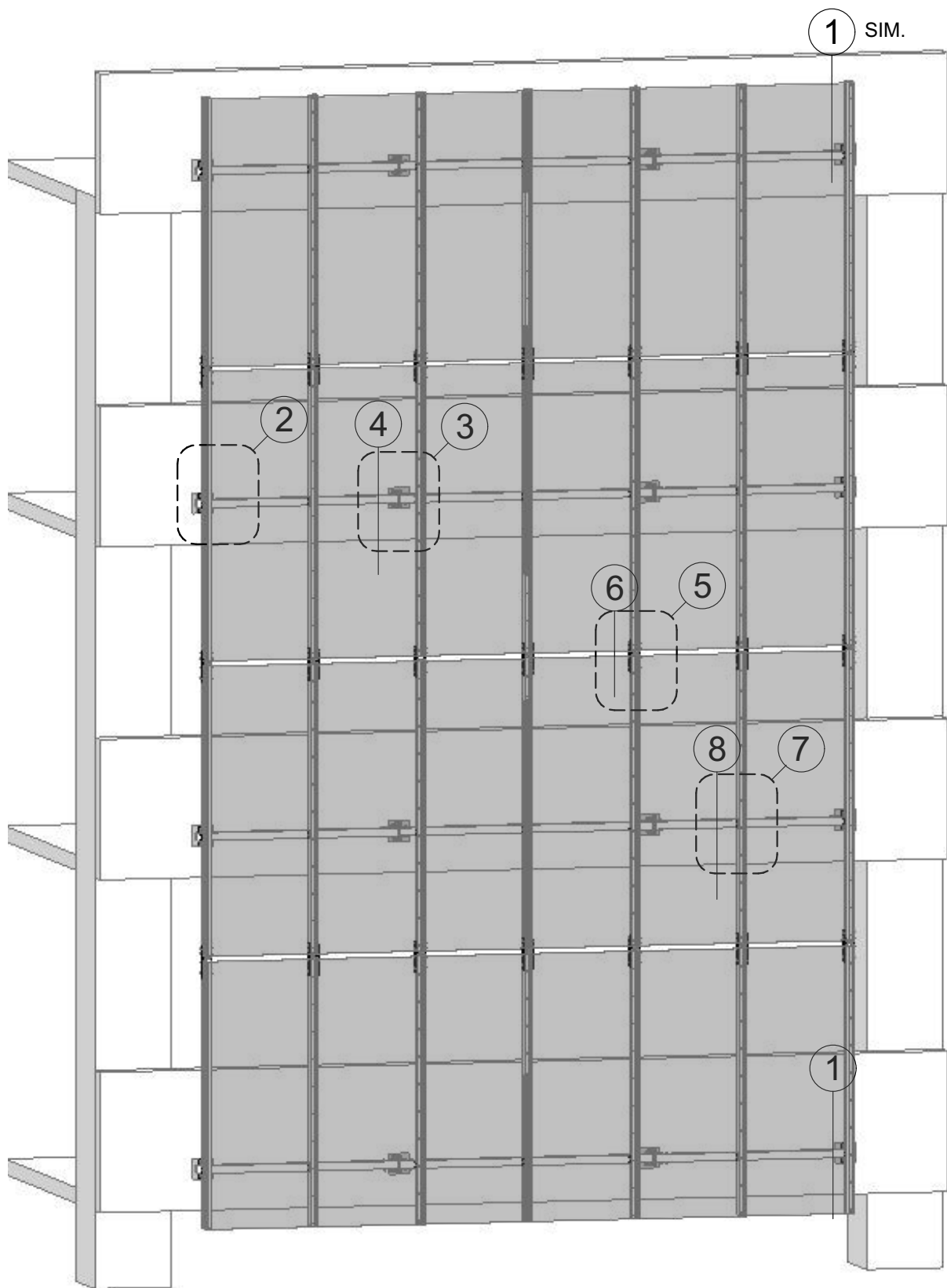
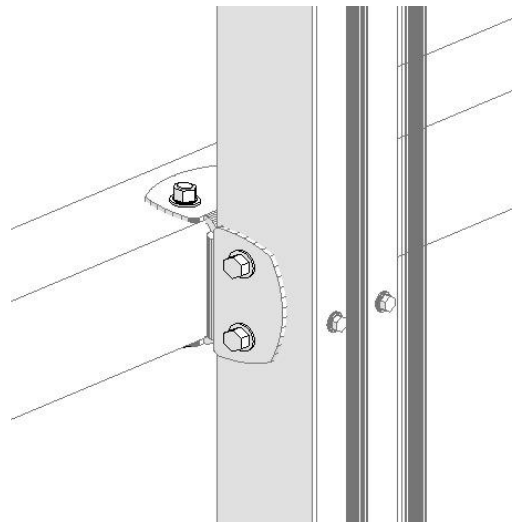
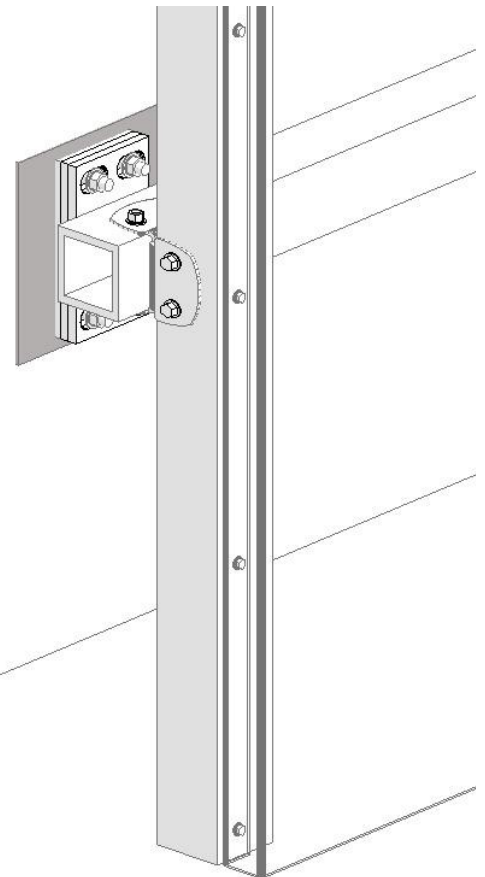
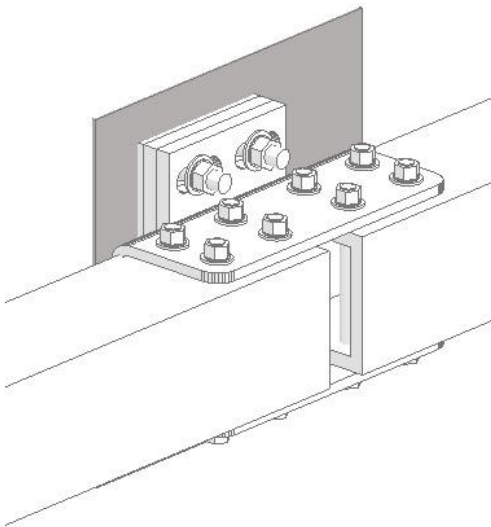
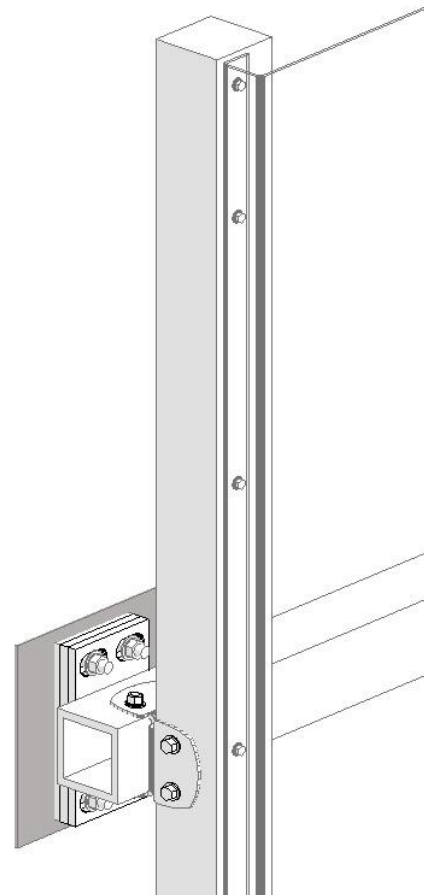
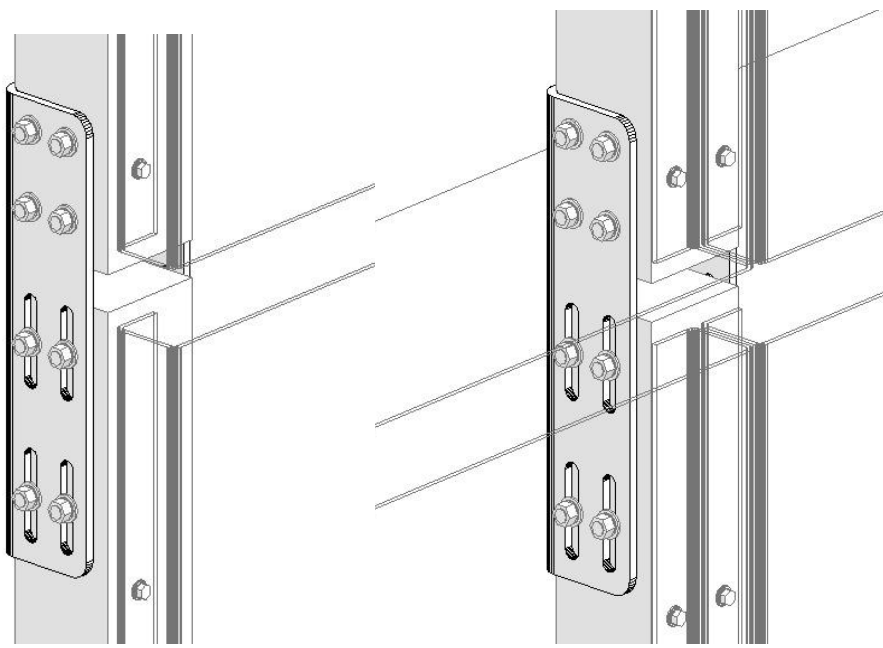


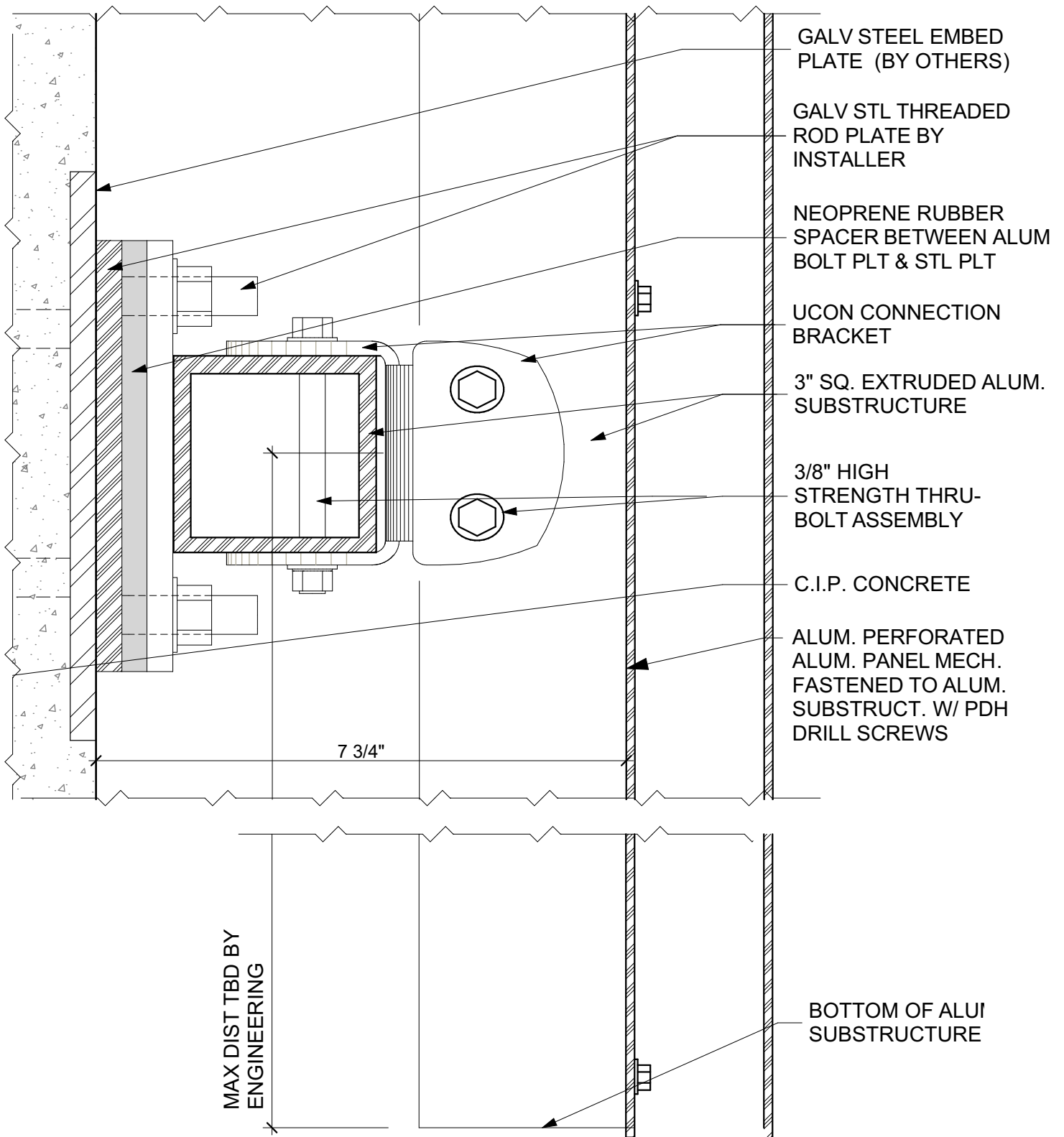
Parasoleil

ParaClad™ 200 Connection Details



PARACLAD 200 BASE DRAWING

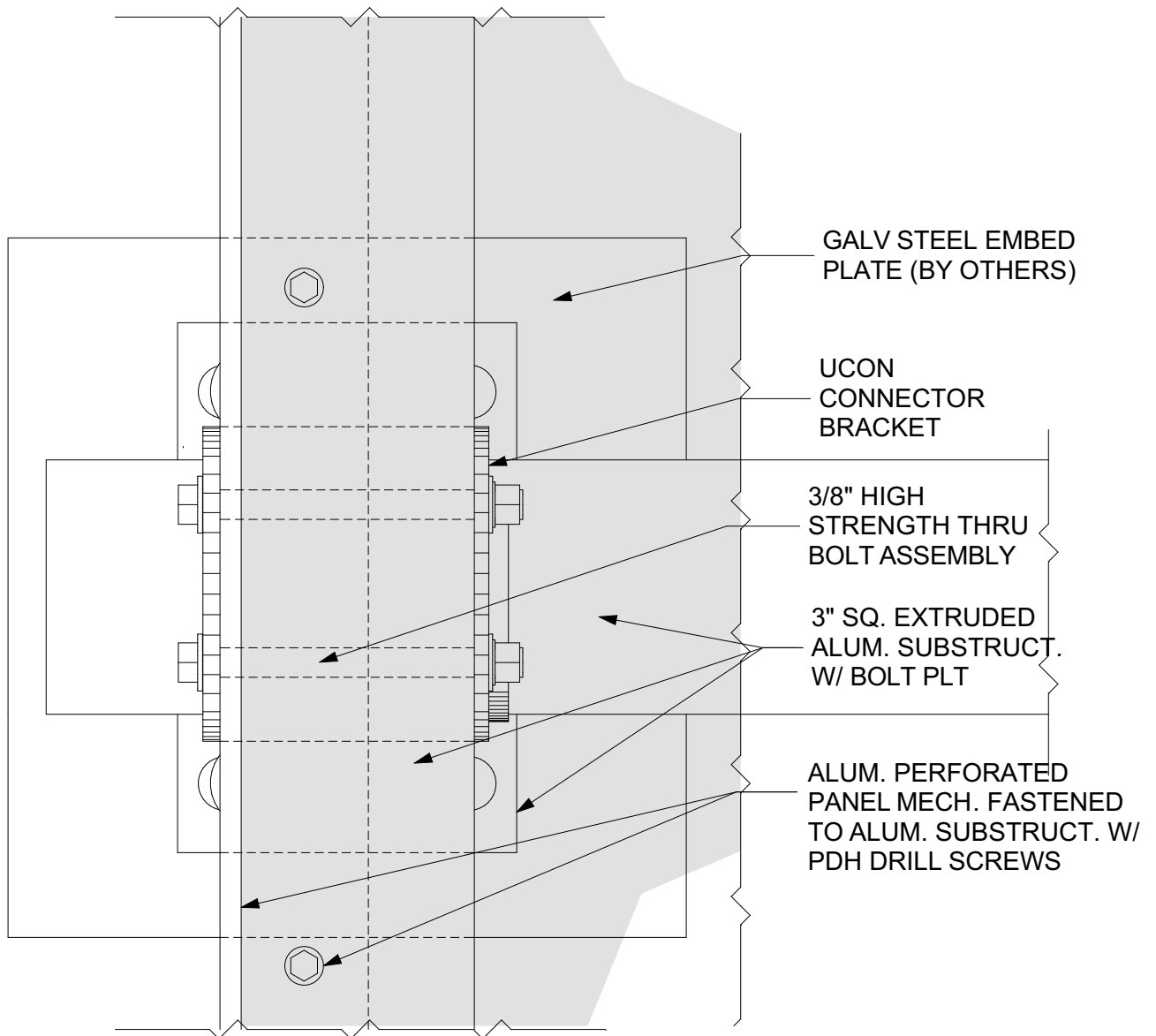




1

BOTTOM CONDITION

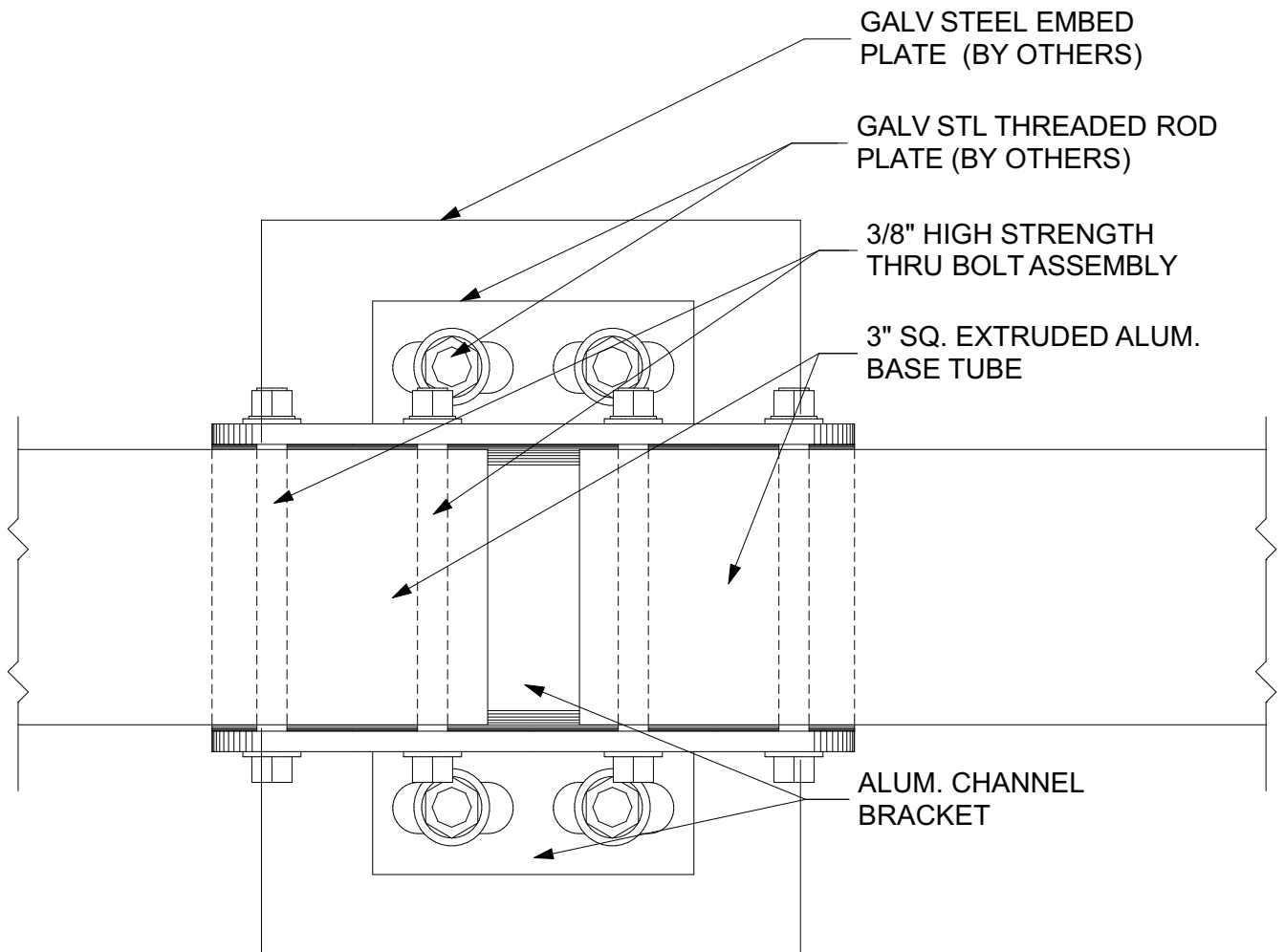
SCALE: 6" = 1'-0"



2

EDGE CONDITION - FRONT

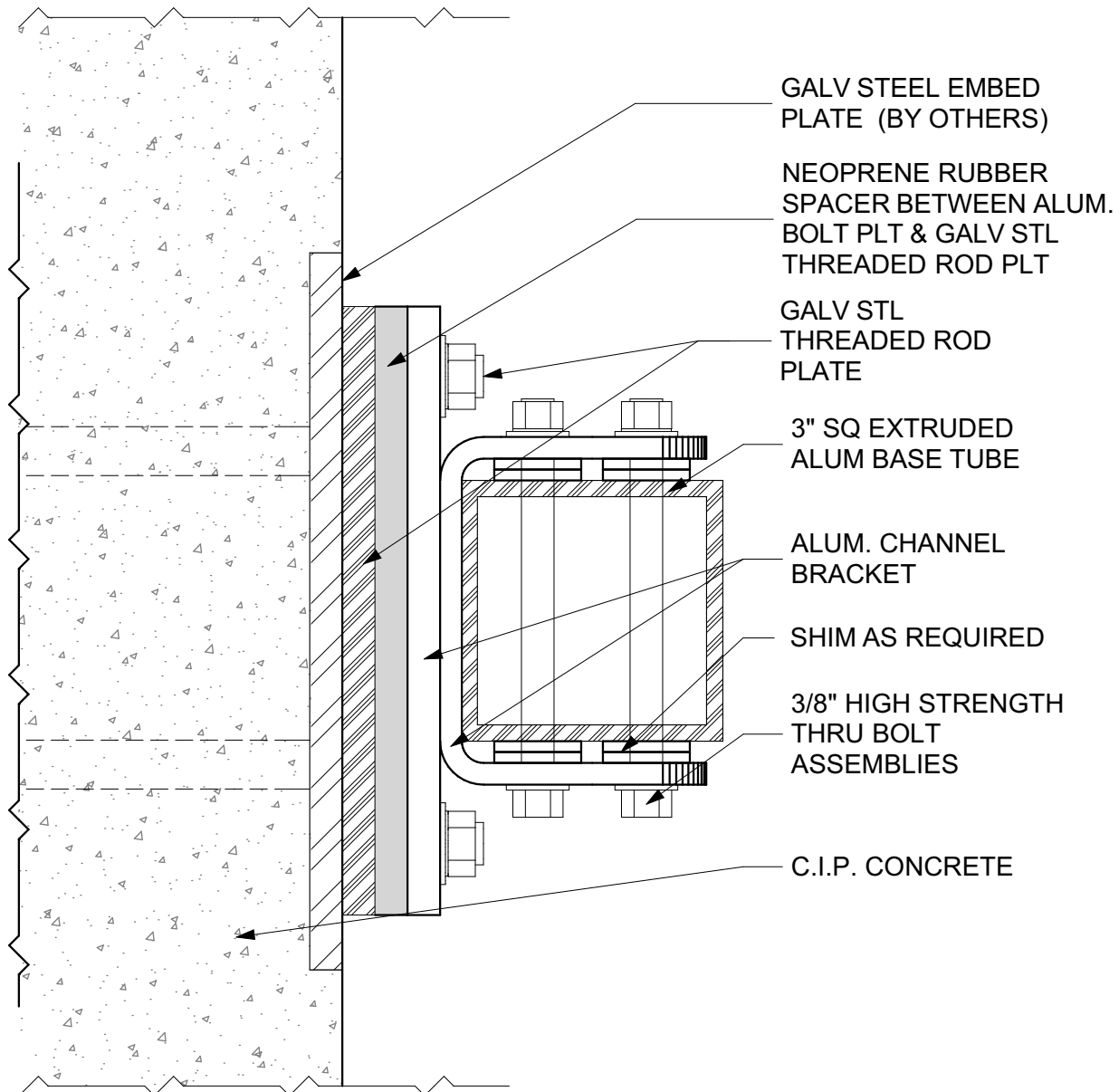
SCALE: 6" = 1'-0"



3

CHANNEL BRACKET CONNECTION

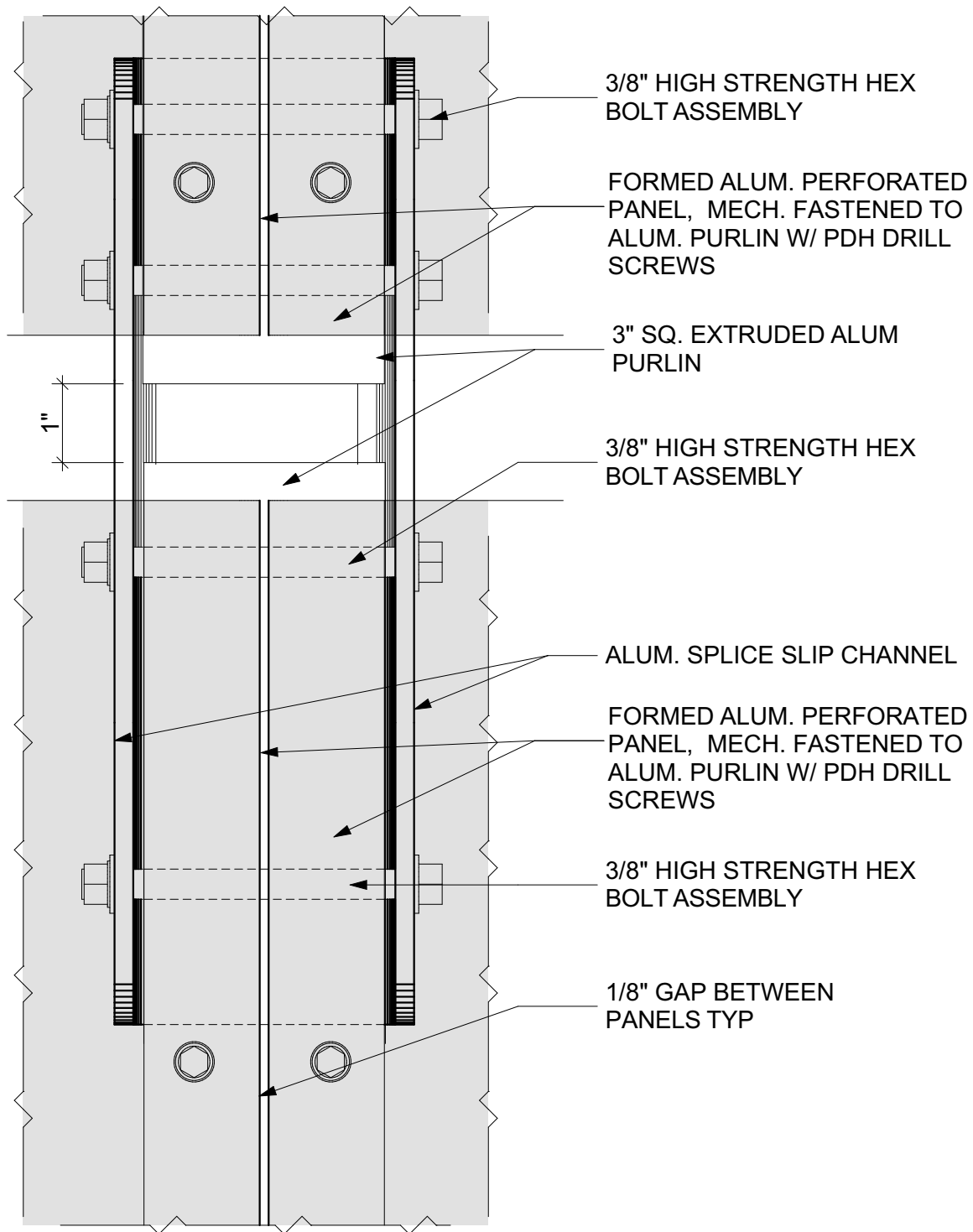
SCALE: 6" = 1'-0"



4

CHANNEL BRACKET CONNECTION SECT

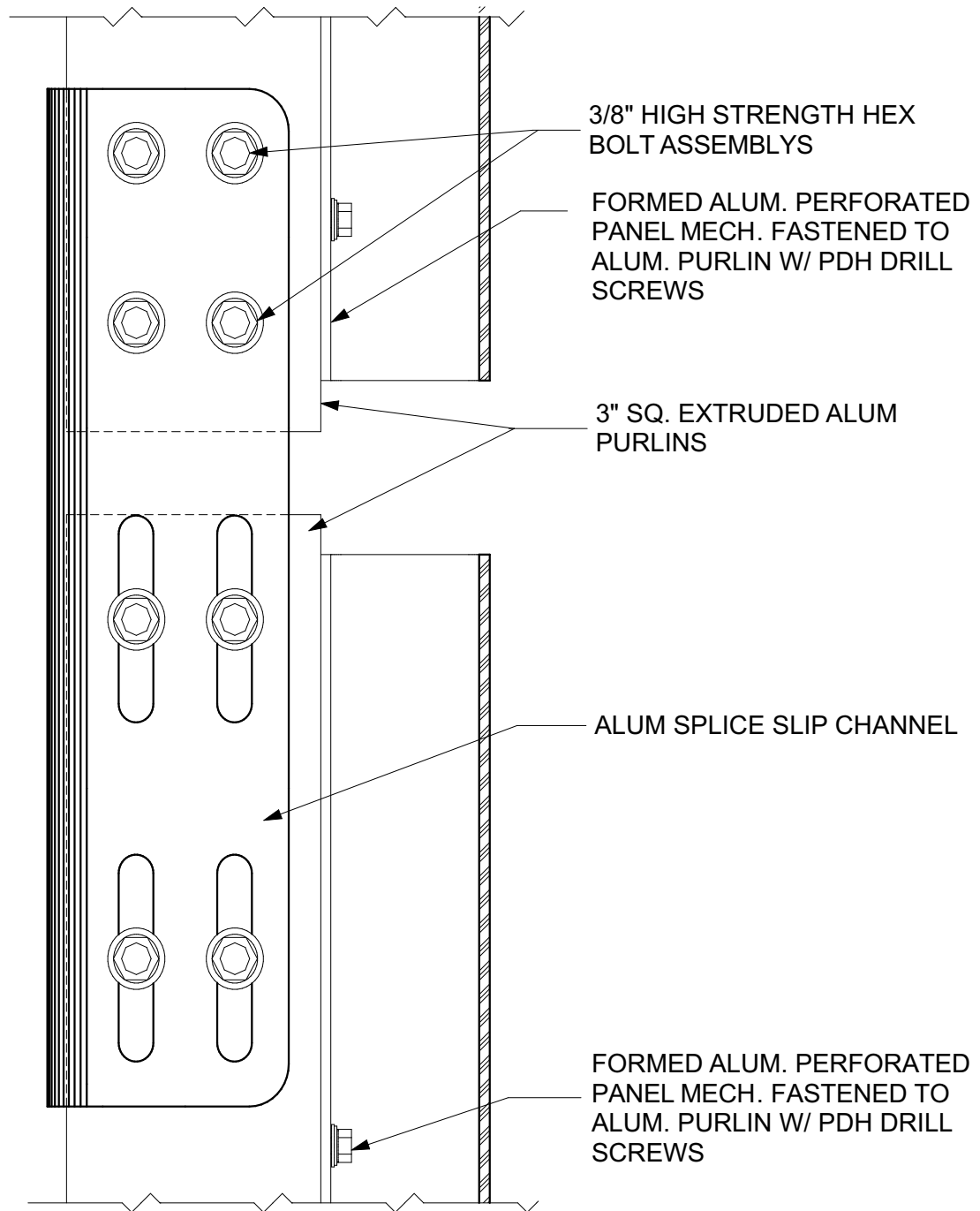
SCALE: 6" = 1'-0"



5

VERT SLIP JOINT FRONT VIEW

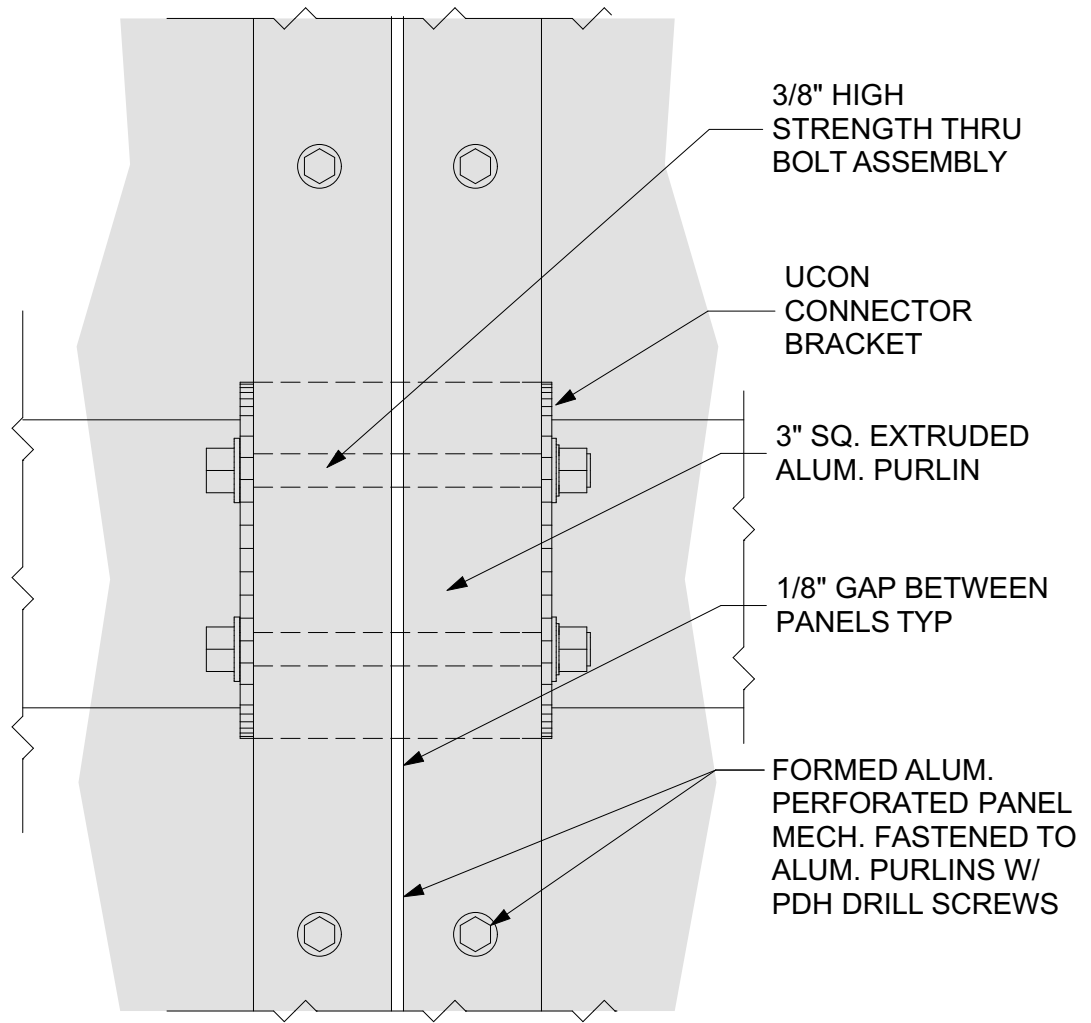
SCALE: 6" = 1'-0"



6

VERT SLIP JOINT SIDE VIEW

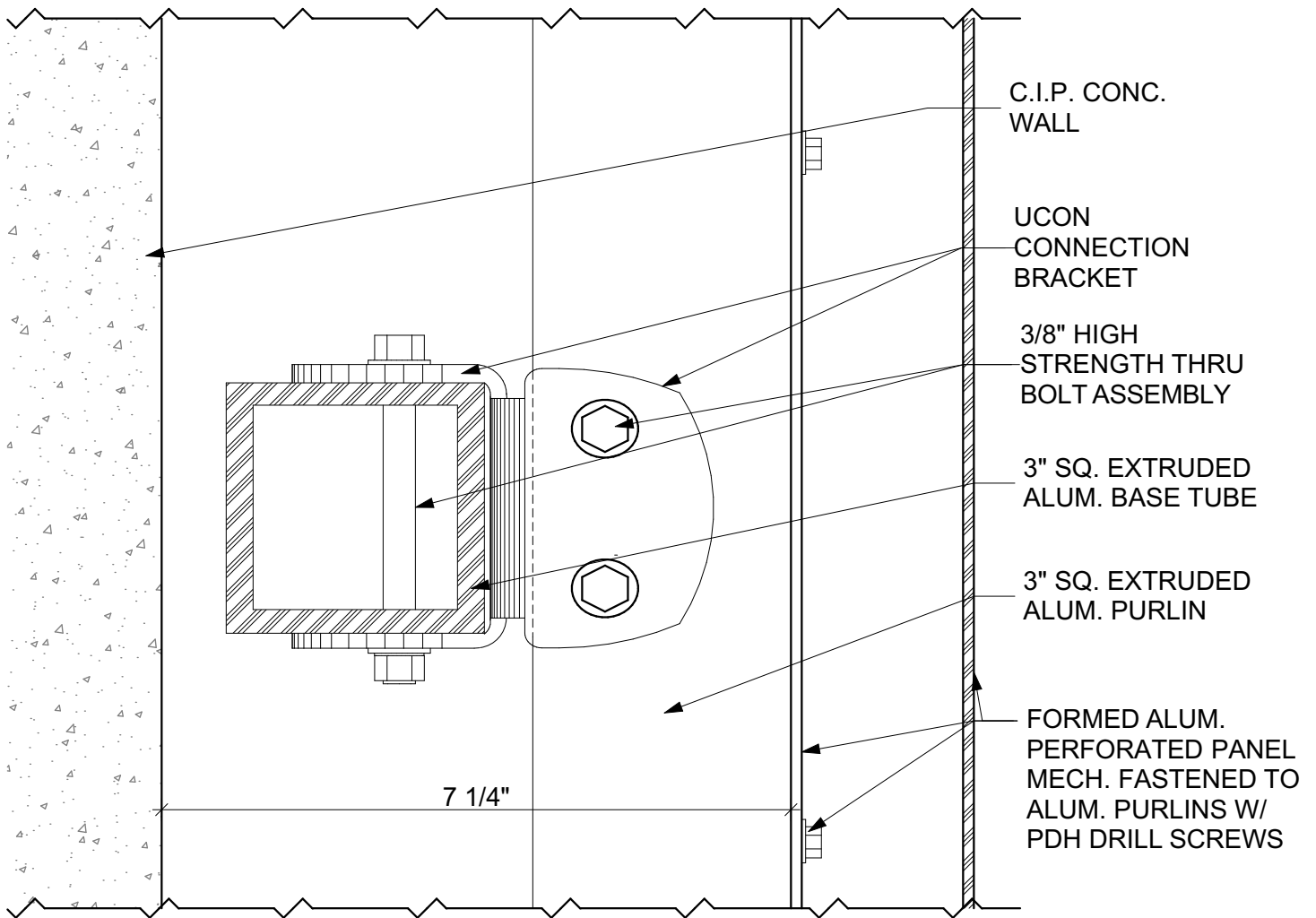
SCALE: 6" = 1'-0"



7

UCON CONNECTOR FRONT

SCALE: 6" = 1'-0"



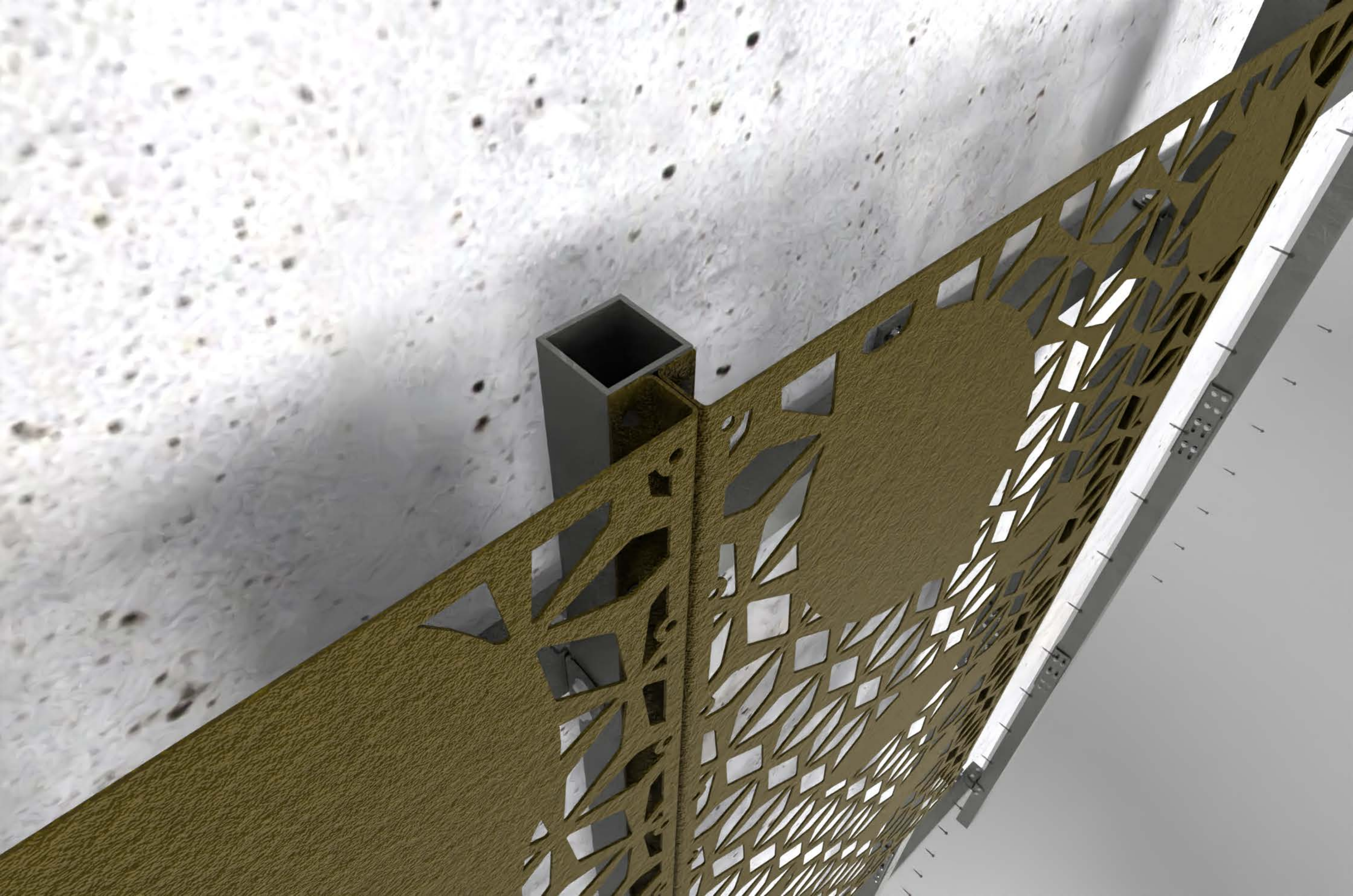
8

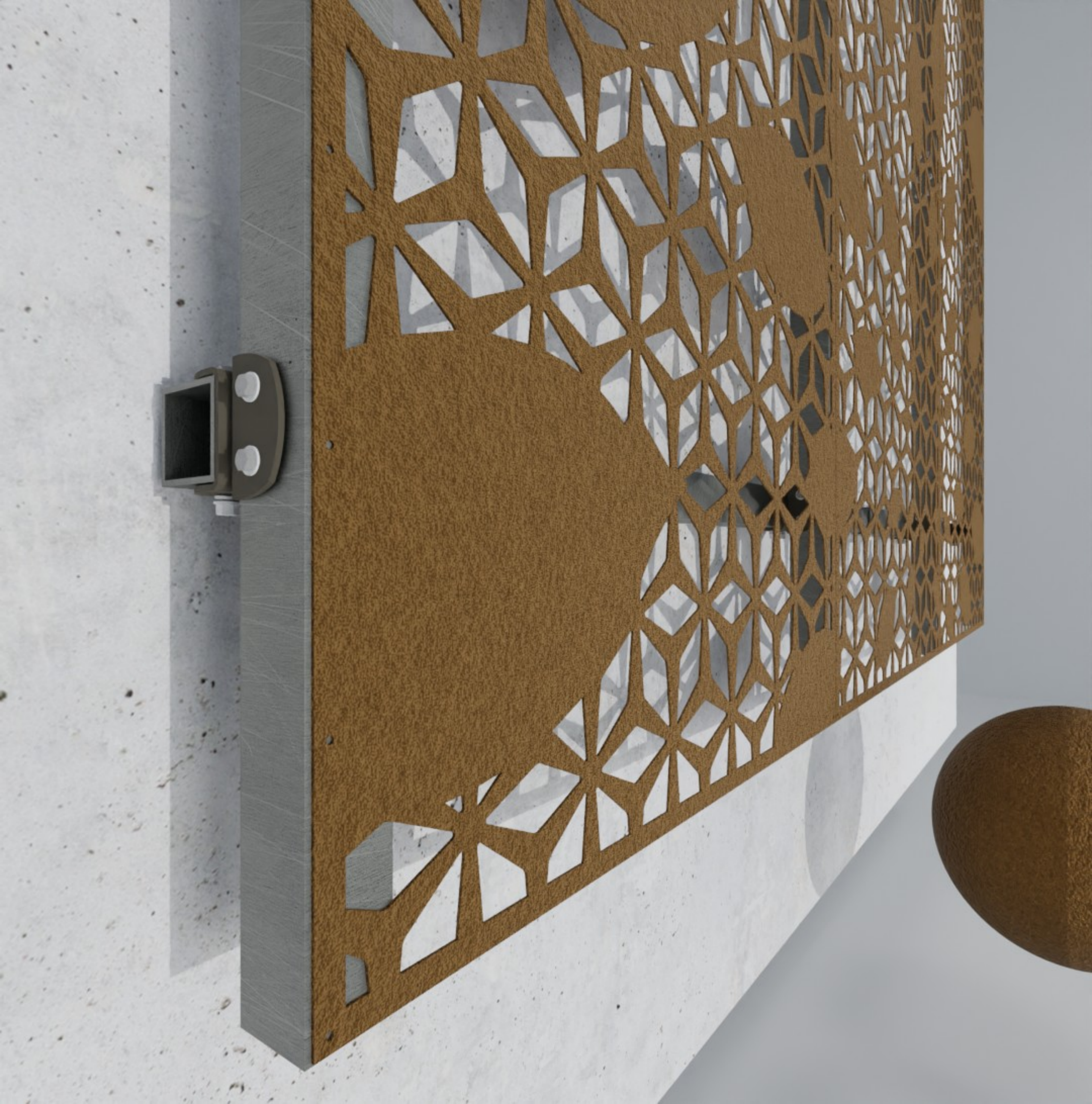
UCON CONNECTOR - SIDE

SCALE: 6" = 1'-0"












Contact Parasoleil for complete specifications, installation requirements and warranty coverage.

All Parasoleil patterns are protected under copyright law. Copying, modifying, or any unauthorized use of these patterns is strictly prohibited.

We look forward to hearing from you.

6510 W. 91st Avenue, Suite 100
Westminster, CO 80031
Phone | (303) 327-9997
Email | hello@parasoleil.com
parasoleil.com

 /ParasoleilUSA
 /Parasoleil
 /ParasoleilUSA

Parasoleil