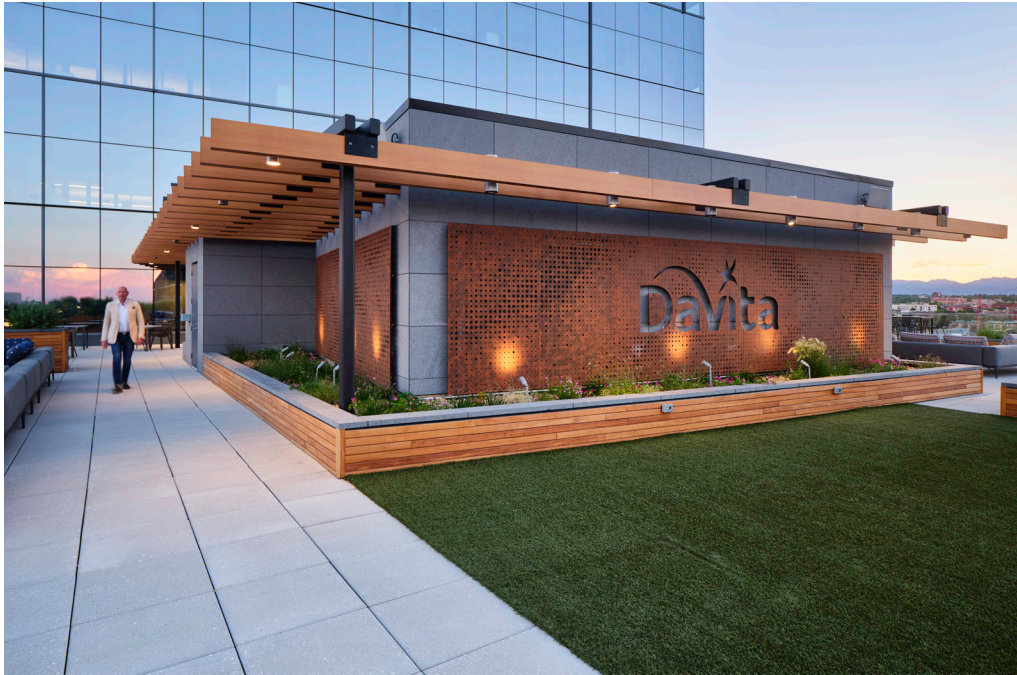
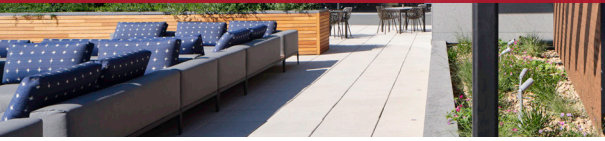


PARASOLEIL CASE STUDY

# DaVita Rooftop

DENVER, COLORADO

Completed July 2018



## PRODUCT DETAILS

### APPLICATION

cladding

### MATERIAL

aluminum

### PATTERN

custom

### FINISH

COR-11™

parasoleil.com  
303.589.4524  
hello@parasoleil.com

## PROJECT DETAILS

### SITUATION

The DaVita global headquarters expansion included a 410,000 SF Class A, LEED Platinum office building in downtown Denver next to their existing HQ. With such a deep connection between the Company and the city of Denver, the rooftop amenity space was the ideal place to highlight the intersection of the two.

### SOLUTION

Connecting the Denver skyline views with the company brand was essential. This goal facilitated the design of a warm and inviting rooftop space with the DaVita logo front and center. Following a CEU presentation delivered to the lead architect, the designers looked to Parasoleil for design, finish, and fastening guidance on the feature screen piece.

*Parasoleil*

# From the Client

## OWNER

DaVita

Maintaining the brand meant using their logo in an exterior condition with finishes that were approachable, durable, and sustainable.

## SPECIFIER

Aquilano Leslie Architects  
Gensler Architects

The specifiers vision included a rusted steel look with a low maintenance material. By selecting Parasoleil's COR-11™ powdercoat finish, they were able to reference the elemental nature of rusting steel without the downside maintenance and longevity issues. The installation also needed to look as if it were floating – a design feature that was critical to the overall success of the space.

## CONTRACTORS

Saunders  
Gen3

Saunders required a trustworthy supplier who could coordinate detailed installation requirements early in the planning stages. A prior relationship between Gen3 and Parasoleil ensured a low risk and easy installation.

## PANEL

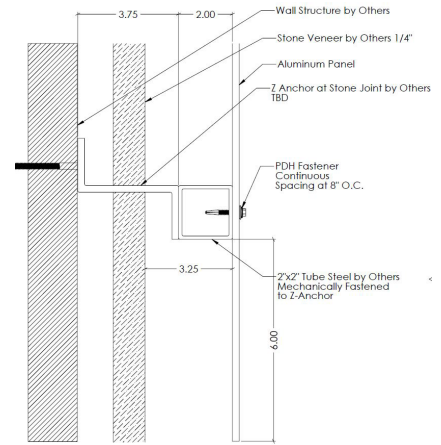
- 1/4" aluminum with steel frame
- 15 panels total
- 14 unique sizes

## HARDWARE

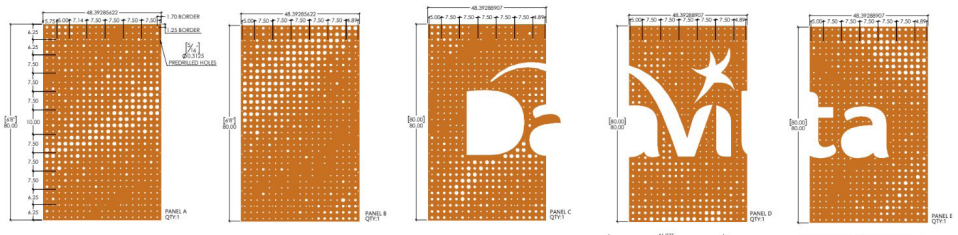
- Parasoleil Direct Hex (PDH) drill screws painted to match

## ENGINEERING

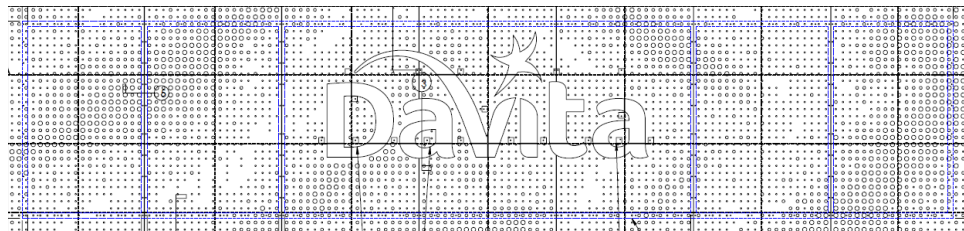
- Accommodates rooftop wind pressures with support every 45" to satisfy wind speeds



**Z-ANCHOR CONNECTION DETAIL**  
Strategically placed through gaps in the stone veneer to achieve "floating panel" aesthetic



The pattern is composed of three hole sizes distributed on a grid array to form the abstract "moving masses". Intricate interaction of holes sizes was used to blur edges of the pattern elements achieving the smooth, flowing organic aesthetic. Pairing manufacturing with design was critical to prevent the panels from warping under the intense heat of laser-cutting. This could cause many inaccuracies with the expected installation performance.



*Parasoleil*

*All Parasoleil finishes are warranted for 10 years and all projects are backed by the Parasoleil brand. Patterns and hardware are protected under copyright and patent law, respectively.*